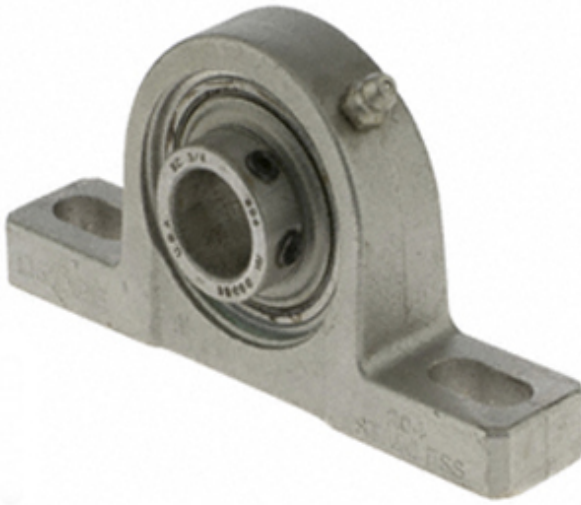




## RAG Driveshaft USA CORP.



1 Inch | 25.4 Millimeter x 1.188 Inch | 30.17  
Millimeter x 1.438 Inch | 36.525 Millimeter  
DODGE P2B-SCEZ-100-SHCR Pillow Block  
Bearings

Bearing No. P2B-SCEZ-100-SHCR

P2B-SCEZ-100-SHCR Bearing 2D drawings and 3D  
CAD models

Category	Pillow Block Bearings
Inventory	4.0
Manufacturer Name	ABB MOTORS AND MECHANICAL INC
Minimum Buy Quantity	N/A
Weight	0.717
EAN	0782475581887
Product Group	M06110
Number of Mounting Holes	2
Mounting Method	Set Screw
Housing Style	2 Bolt Pillow Block
Rolling Element	Ball Bearing
Housing Material	Stainless Steel
Expansion / Non-expansion	Non-expansion
Mounting Bolts	3/8 Inch
Relubricatable	Yes
Insert Part Number	INS-SC-100-CR
Seals	Single Lip Contact
Housing Configuration	1 Piece Solid
Inch - Metric	Inch
Other Features	Single Row   Normal Duty   Corrosion Resistant
Long Description	2 Bolt Pillow Block; 1" Bore; 1-7/16" Base to Center Height; Set Screw Mount;



## RAG Driveshaft USA CORP.

	Ball Bearing; 3-11/16" Minimum Bolt Spacing; 4-1/2" Bolt Spacing Maximum; Relubricatable; Stainless St
Category	Pillow Block
UNSPSC	31171511
Harmonized Tariff Code	8483.20.40.40
Noun	Bearing
Keyword String	Pillow Block
Manufacturer URL	<a href="http://www.dodge-pt.com">http://www.dodge-pt.com</a>
Manufacturer Item Number	P2B-SCEZ-100-SHCR
Manufacturer Internal Number	127671
Weight / LBS	1.59
Bolt Spacing Maximum	4.5 Inch   114.3Millimeter
B	1.438 Inch   36.525 Millimeter
D	1.188 Inch   30.17 Millimeter
Actual Bolt Center to Center	0 Inch   0Millimeter
d	1 Inch   25.4 Millimeter
Nominal Bolt Center to Center	4.1 Inch   105 Millimeter
Bolt Spacing Minimum	3.688 Inch   93.675Millimeter