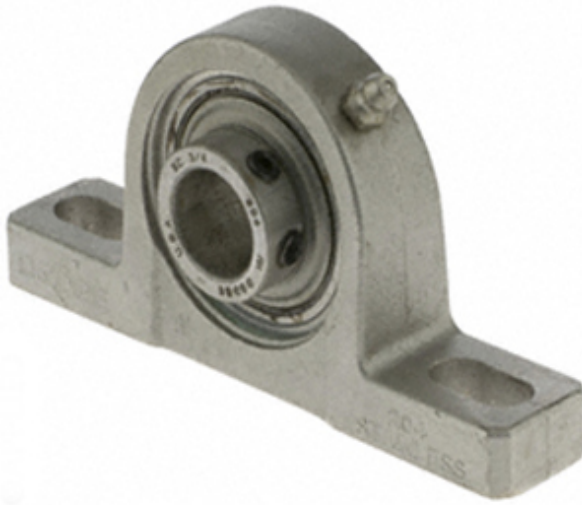




RAG Driveshaft USA CORP.

1.938 Inch | 49.225 Millimeter x 1.75 Inch | 44.45 Millimeter x 2.25 Inch | 57.15 Millimeter DODGE P2B-SCEZ-115-SHCR Pillow Block Bearings



Bearing No. P2B-SCEZ-115-SHCR

P2B-SCEZ-115-SHCR Bearing 2D drawings and 3D CAD models

Category	Pillow Block Bearings
Inventory	9.0
Manufacturer Name	ABB MOTORS AND MECHANICAL INC
Minimum Buy Quantity	N/A
Weight	2.31
EAN	0782475582853
Product Group	M06110
Number of Mounting Holes	2
Mounting Method	Set Screw
Housing Style	2 Bolt Pillow Block
Rolling Element	Ball Bearing
Housing Material	Stainless Steel
Expansion / Non-expansion	Non-expansion
Mounting Bolts	5/8 Inch
Relubricatable	Yes
Insert Part Number	INS-SC-115-CR
Seals	Single Lip Contact
Housing Configuration	1 Piece Solid
Inch - Metric	Inch
Other Features	Single Row Normal Duty Corrosion Resistant
Long Description	2 Bolt Pillow Block; 1-15/16" Bore; 2-1/4" Base to Center Height; Set Screw Mount; Ball Bearing;



RAG Driveshaft USA CORP.

	5-49/64" Minimum Bolt Spacing; 6-11/16" Bolt Spacing Maximum; Relubricatable; Stain
Category	Pillow Block
UNSPSC	31171511
Harmonized Tariff Code	8483.20.40.40
Noun	Bearing
Keyword String	Pillow Block
Manufacturer URL	http://www.dodge-pt.com
Manufacturer Item Number	P2B-SCEZ-115-SHCR
Manufacturer Internal Number	127680
Weight / LBS	5.09
d	1.938 Inch 49.225 Millimeter
Bolt Spacing Maximum	6.688 Inch 169.875 Millimeter
Nominal Bolt Center to Center	6.3 Inch 160 Millimeter
Actual Bolt Center to Center	0 Inch 0 Millimeter
B	2.25 Inch 57.15 Millimeter
D	1.75 Inch 44.45 Millimeter
Bolt Spacing Minimum	5.766 Inch 146.456 Millimeter