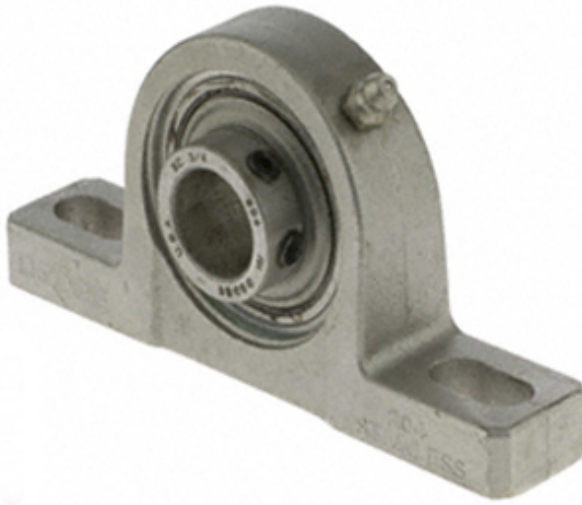




RAG Driveshaft USA CORP.



1.188 Inch | 30.175 Millimeter x 1.391 Inch |
35.331 Millimeter x 1.625 Inch | 41.275 Millimeter
DODGE P2B-SCEZ-103-SHCR Pillow Block
Bearings

Bearing No. P2B-SCEZ-103-SHCR

P2B-SCEZ-103-SHCR Bearing 2D drawings and 3D
CAD models

Category	Pillow Block Bearings
Inventory	8.0
Manufacturer Name	ABB MOTORS AND MECHANICAL INC
Minimum Buy Quantity	N/A
Weight	1.057
EAN	0782475582488
Product Group	M06110
Number of Mounting Holes	2
Mounting Method	Set Screw
Housing Style	2 Bolt Pillow Block
Rolling Element	Ball Bearing
Housing Material	Stainless Steel
Expansion / Non-expansion	Non-expansion
Mounting Bolts	1/2 Inch
Relubricatable	Yes
Insert Part Number	INS-SC-103-CR
Seals	Single Lip Contact
Housing Configuration	1 Piece Solid
Inch - Metric	Inch
Other Features	Single Row Normal Duty Corrosion Resistant
Long Description	2 Bolt Pillow Block; 1-3/16" Bore; 1-5/8" Base to Center Height; Set Screw Mount;



RAG Driveshaft USA CORP.

	Ball Bearing; 4-17/64" Minimum Bolt Spacing; 5" Bolt Spacing Maximum; Relubricatable; Stainless St
Category	Pillow Block
UNSPSC	31171511
Harmonized Tariff Code	8483.20.40.40
Noun	Bearing
Keyword String	Pillow Block
Manufacturer URL	http://www.dodge-pt.com
Manufacturer Item Number	P2B-SCEZ-103-SHCR
Manufacturer Internal Number	127672
Weight / LBS	2.33
D	1.391 Inch 35.331 Millimeter
Bolt Spacing Minimum	4.266 Inch 108.356Millimeter
Bolt Spacing Maximum	5 Inch 127Millimeter
d	1.188 Inch 30.175 Millimeter
Actual Bolt Center to Center	0 Inch 0Millimeter
Nominal Bolt Center to Center	4.6 Inch 118 Millimeter
B	1.625 Inch 41.275 Millimeter