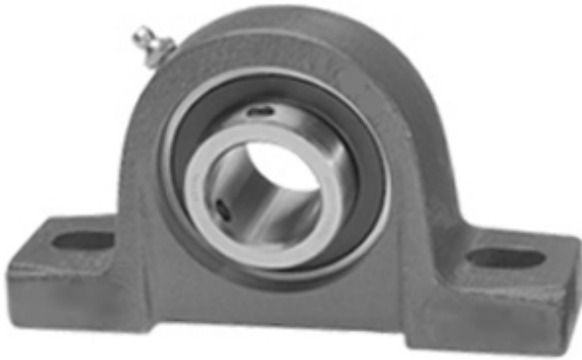




## RAG Driveshaft USA CORP.

1.625 Inch | 41.275 Millimeter x 1.937 Inch | 49.2  
Millimeter x 2.125 Inch | 53.98 Millimeter IPTCI  
UCP 209 26 Pillow Block Bearings



UCP 209 26 Bearing 2D drawings and 3D CAD models

Bearing No. UCP 209 26

Category	Pillow Block Bearings
Inventory	4.0
Manufacturer Name	IPTCI BEARINGS
Minimum Buy Quantity	N/A
Weight	2.585
Product Group	M06110
Number of Mounting Holes	2
Mounting Method	Set Screw
Housing Style	2 Bolt Pillow Block
Rolling Element	Ball Bearing
Housing Material	Cast Iron
Expansion / Non-expansion	Non-expansion
Mounting Bolts	1/2 Inch
Relubricatable	Yes
Insert Part Number	UC209-26
Seals	B Seal
Housing Configuration	1 Piece Solid
Inch - Metric	Inch
Other Features	Single Row   Standard Duty   Wide Inner Race   High Base
Long Description	2 Bolt Pillow Block; 1-5/8" Bore; 2-1/8" Base to Center Height; Set Screw Mount; Ball Bearing; Relubricatable; Cast Iron; B Seal; Non- expansion



## RAG Driveshaft USA CORP.

Category	Pillow Block
UNSPSC	31171511
Harmonized Tariff Code	8483.20.40.40
Noun	Bearing
Keyword String	Pillow Block
Manufacturer URL	<a href="http://www.iptci.com">http://www.iptci.com</a>
Manufacturer Item Number	UCP 209 26
Weight / LBS	5.7
Actual Bolt Center to Center	5.8 Inch   146.1Millimeter
Bolt Spacing Minimum	0 Inch   0Millimeter
d	1.625 Inch   41.275 Millimeter
Nominal Bolt Center to Center	5.8 Inch   146.5 Millimeter
D	1.937 Inch   49.2 Millimeter
B	2.125 Inch   53.98 Millimeter
Bolt Spacing Maximum	0 Inch   0Millimeter